



MONTHLY MEMBERSHIP PROGRESS REPORT

District 315B2

Results as of: 01/31/2019

GMT: SWADESH RANJAN SAHA

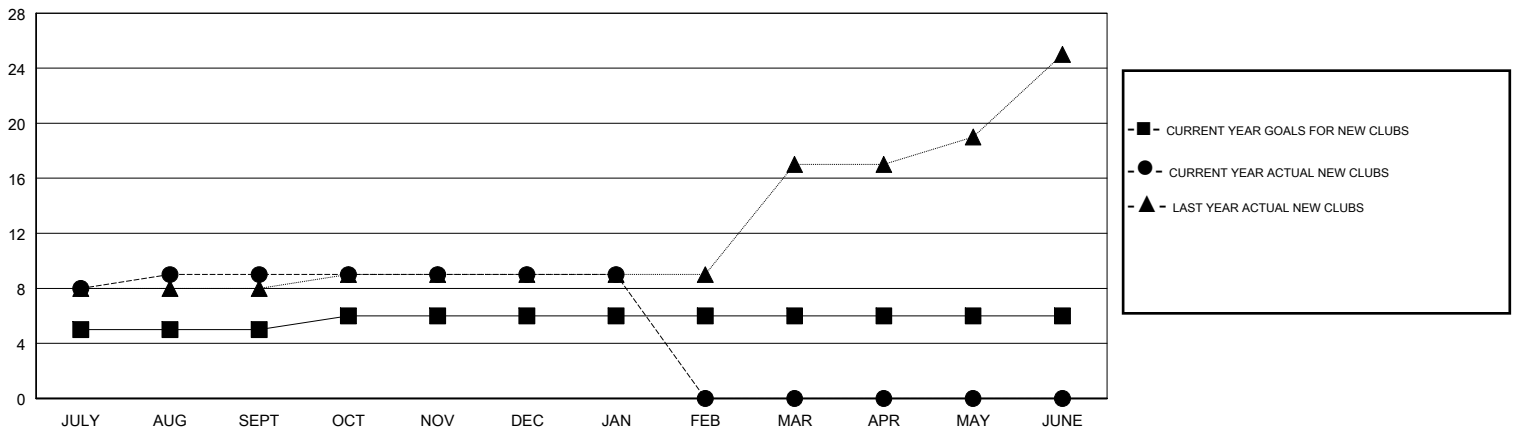
LOCATION REP OF BANGLADESH

GMT CA

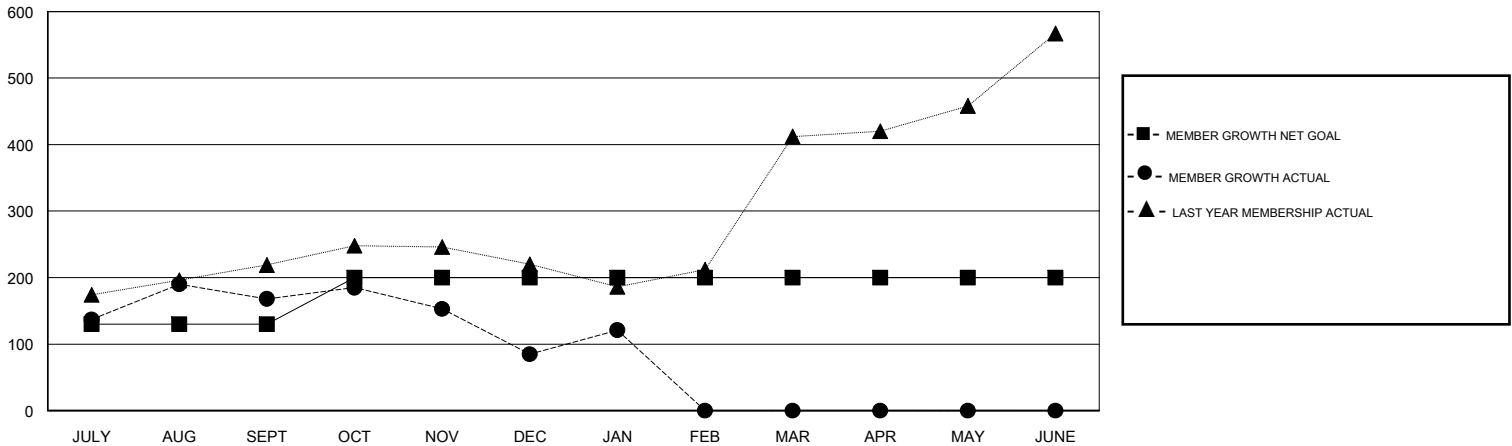
Clubs			
RESULTS FOR 2018-2019			
QUARTER	NEW CLUB GOAL	NEW CLUBS	DROPPED CLUBS
JULY/AUG/SEPT	5	9	2
OCT/NOV/DEC	1	0	3
JAN/FEB/MAR	0	0	0
APR/MAY/JUNE	0	0	0

Members			
RESULTS FOR 2018-2019			
QUARTER	MEMBER GROWTH NET GOAL	MEMBER GROWTH ACTUAL	DROPPED MEMBERS ACTUAL (including transfers)
JULY/AUG/SEPT	130	263	93
OCT/NOV/DEC	70	31	114
JAN/FEB/MAR	0	44	5
APR/MAY/JUNE	0	0	0

GOALS AND ACTUAL NEW CLUBS CUMULATIVE



GOALS AND ACTUAL MEMBERS CUMULATIVE



DROPPED CLUBS: 5	44 CLUBS OF 98 ADDED 1 OR MORE NEW MEMBERS	<u>GENDER DISTRIBUTION</u> MALE 1,886 (78.88%) FEMALE 505 (21.12%) Women Percentage Fiscal Year Goal: 30%
<u>DROPPED MEMBERS</u> DECEASED 5 CLUB CANCELLED 125 OTHER 82 TOTAL 212	CLICK HERE FOR CUMULATIVE MEMBERSHIP DATA	TOTAL FAMILY UNIT MEMBERS 789 FAMILY MEMBERS PAYING HALF DUES 498